



PRODUCT GUIDE

The Perfect Anywhere Mat

AN  **ergo**advantage inc BRAND

Available at



Production Mats

Never step foot on another mat again! Stand-Safe™ Production Anti-Fatigue Mat is made from an industrial strength thermoplastic, derived from 100% recycled material. The perfect mix of all-day comfort, support, and durability.

Specifications

Dimensions:	0.75"x28"x40"
Composition:	100% Recycled TPU
Durometer:	Shore Hardness "A" 75
Color:	Charcoal Black



SS1-PRO-B

Stand-Safe™ Anti-Fatigue Mat

Closed top design for dry areas

SS2-PRO-B

Stand-Safe™ Anti-Fatigue Drainage Mat

Holes for drainage of non-oily liquids

The Perfect Foam Rollout Matting Replacement

Stand-Safe™ Connector seamlessly joins mats together to create a custom long-run

SS-CON-B



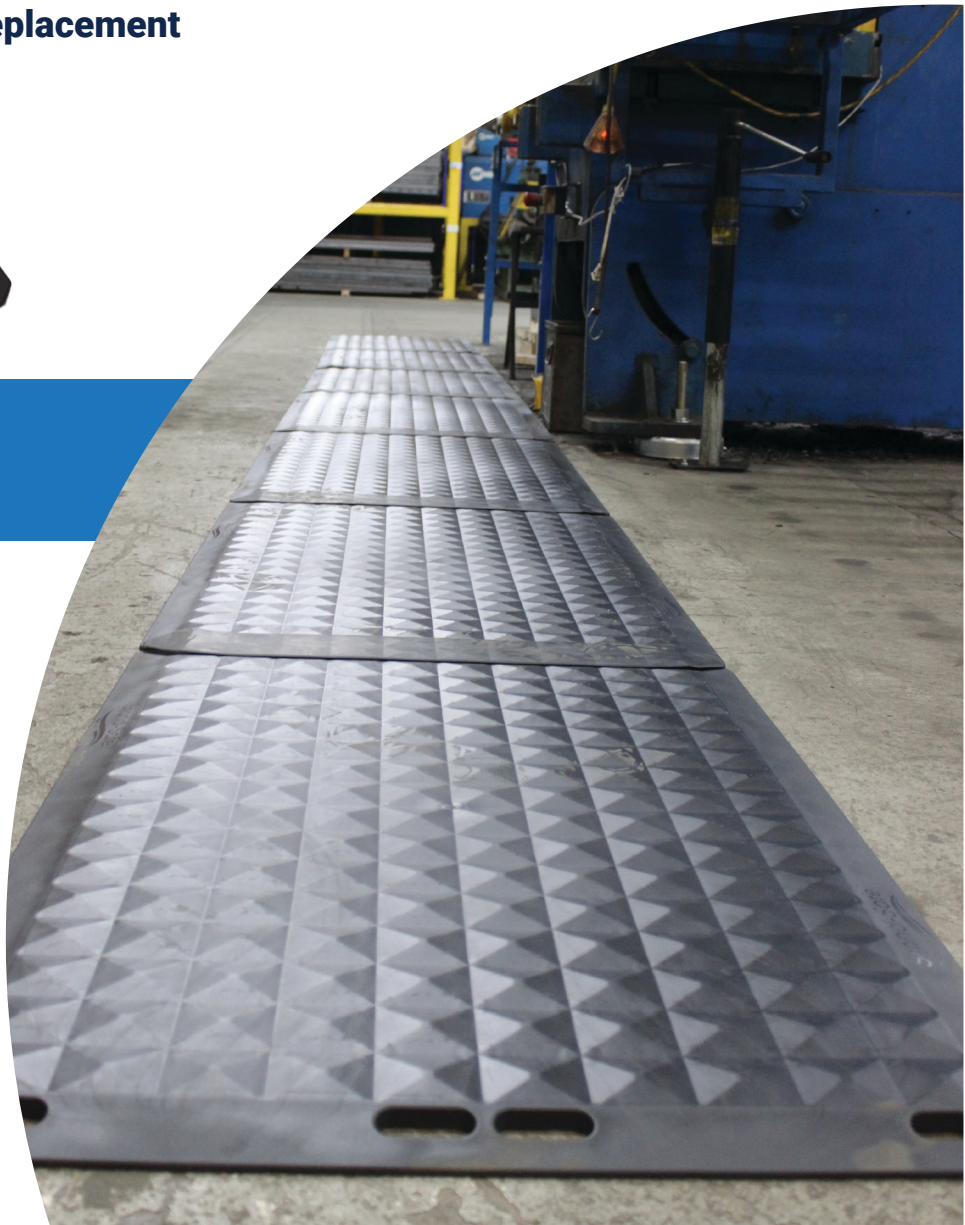
- Damage a mat? Only replace what's needed
- Easy installation and maintenance
- Fully recyclable at end of life

Typical Applications

Bottling plants, production and assembly lines, manufacturing, packaging and distribution facilities, logistics depots, shipping and receiving



MADE FROM 100% REPURPOSED TPU
THAT MAY HAVE ENDED UP IN NORTH
AMERICAN LANDFILLS

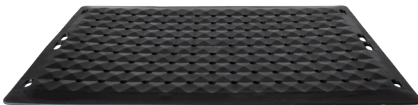


Antimicrobial Mats

Stand-Safe™ was developed to provide a superior safety solution for any clean workplace environments. The unique design promotes all-day comfort, drainage of liquids, and is embedded with an antimicrobial additive that fights bacterial growth.

Specifications

Dimensions:	0.75"x28"x40"
Composition:	100% Recycled TPU with Antimicrobial Additive
Durometer:	Shore Hardness "A" 75
Color:	Charcoal Black



SS1-AM-B

Stand-Safe™ Anti-Fatigue Mat - Antimicrobial

Closed top design for dry areas

SS2-AM-B

Stand-Safe™ Anti-Fatigue Drainage Mat - Antimicrobial

Holes for drainage of non-oily liquids

Antimicrobial Testing

Fungal Resistance:
ASTM G-21-15

0 (sample remained free of fungal growth)

Bacterial Resistance:
ISO 22196:2011

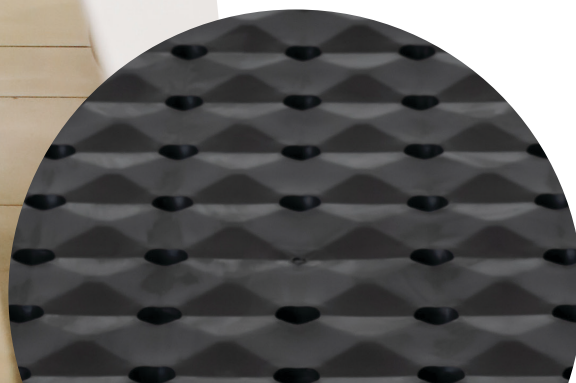
>99% bacteria reduction in E. coli and MRSA

Perfect for any Clean Environment

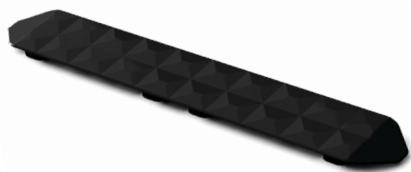
Material:	Water resistant material allows for quick drying
Drainage:	Designed to channel liquids off the surface and away from working area
Airflow:	Leg structure allows for maximum airflow under the mat
Antimicrobial:	Embedded throughout the mat and never wears off

Typical Applications

Food production, clean rooms, pharmaceutical labs, medical production, meat packing



Accessories



SS-CON-B – Connector

Connect Stand-Safe™ mats end-to-end, creating a seamless long run



SS-VH-B – Vertical Hanger

Easily clean or store Stand-Safe™ with a custom wall mounted hanger



SS-MNT-B – Floor Mounts

Floor mounts ensures Stand-Safe™ stays in place

Chemical Resistance

Weak acids	Weak alkalis	Alcohols	Weatherability	Strong acids	Strong alkalis	Organic solvents	Hydrocarbons	Fuels
Good _____				Fair _____				Poor _____

Stand-Safe™ mats are built with our patented Compression Flex Technology™

Compression domed top combined with the leg structure underneath act like a spring, compressing, storing energy, and rebounding when released.



Scan to Watch Video

Testimonials

"I've waited over 20 years for a mat like this!"

– Plant Manager at a Top soft-drink bottling facility

"The [Stand-Safe™ Mats] have decrease the pains allowing us to stand longer in a more comfortable way."

– AgMedica Bioscience Employee

"My job requires me to stand for extremely long periods of time. These mats give me the comfort I need under my feet to really help me focus on giving my customers the attention they deserve!! Highly recommended!"

– TD Bank Employee